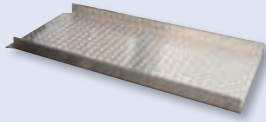


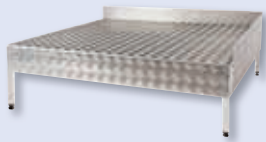
# Wheelchair ramps

Wheelchair ramps





**Step ramps** - variants 1 – 5



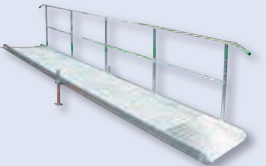
**Platforms for step ramps**



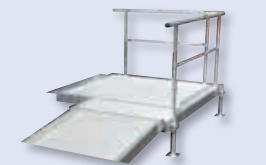
**Door sill ramps**  
single section



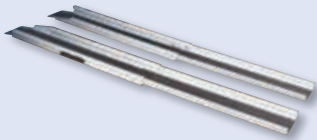
**Balcony- and terrace door ramps**  
2- and 3-section



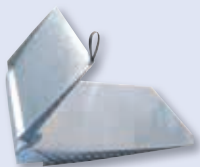
**Section ramps**  
with and without railings



**Platforms for panel ramps**  
with and without railings



**Telescopic- and ascending ramps**  
for variable use

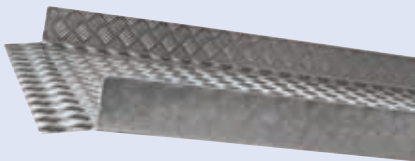


**Special ramp solutions**



**Information**  
ramp calculation, order forms

Load up to  
250 kg

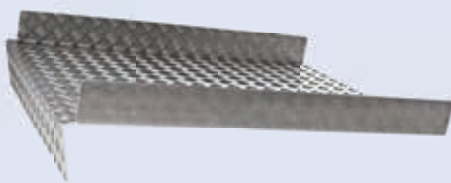


## Step ramp - variant 1

With support and wheel guide curbs  
(with HMV No. 22.50.01.0058)\*

Ramp length up to 300 cm

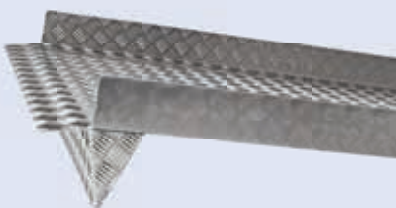
\* The HMV No. is valid only for ramps  
of variant 180 cm wide and up to 230 cm  
long max.



## Step ramp - variant 2

Without support, with props  
and wheel guide curbs

Ramp length up to 300 cm



## Step ramp - variant 3

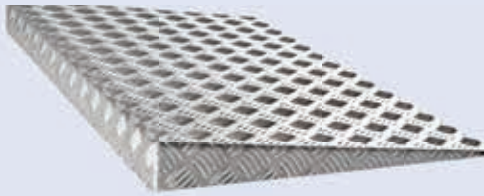
With support, props and  
wheel guide curbs

Ramp length up to 300 cm



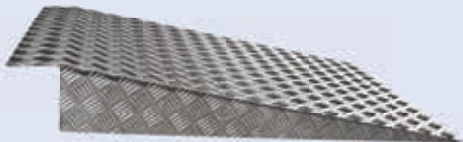
Dimensions and further information can be taken from the  
respective query and order forms at the end of the chapter





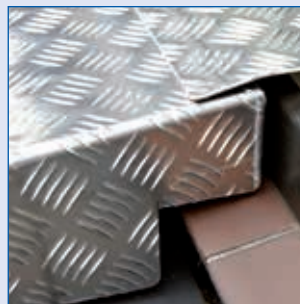
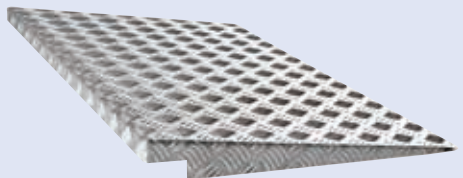
**Step ramp - variant 4**  
Without support, wedge-shaped  
Without wheel guide curbs

Ramp length up to 300 cm



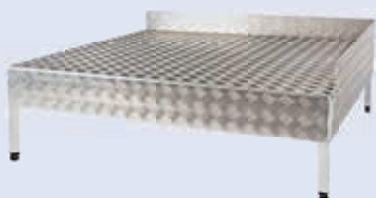
**Step ramp - variant 5**  
With support, wedge-shaped  
without wheel guide curbs

Ramp length up to 300 cm



**Step ramp - "alternative"  
variant with step section**  
Without support, for several steps

Ramp length up to 300 cm



**Platforms for step ramps**

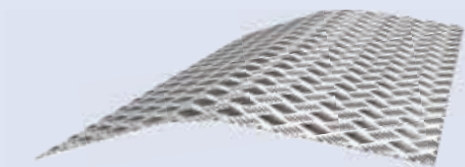


Dimensions and further information can be taken from the respective query and order forms at the end of the chapter

# Balcony- and terrace door ramps – single section



## Single-section models without wheel guide curbs



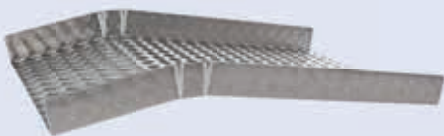
Art. No.	Ramp length	Side length	Weight
eTSR40	40 cm	15 cm	app. 2,5 kg
eTSR70	70 cm	30 cm	app. 4,0 kg
eTSR100	100 cm	45 cm	app. 6,0 kg

Bridging of door sills in which the middle piece lies on the ramp.



- Suitable for smooth door sills
- Unsuitable for terrace doors
- Width and height as per specification
- Max. load up to 120 kg

## Single-section models with wheel guide curbs

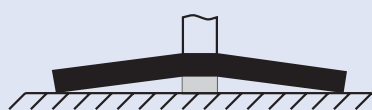


Art. No.	Ramp l.	Side l.	Weight
eTSR70-Ao	70 cm	30 cm	app. 5,5 kg
eTSR100-Ao	100 cm	45 cm	app. 7,5 kg
eTSR130-Ao	130 cm	60 cm	app. 9,0 kg
eTSR160-Ao	160 cm	75 cm	app. 12,0 kg
eTSR190-Ao	190 cm	90 cm	app. 14,0 kg

This variant of the sill ramp remains suspended over the door panel and therefore, offers optimum protection against damage. The lateral upstand provides stability and overrun protection simultaneously.



- Ideal for door panels, if the ramp is to stay in position
- Width and height as per specification
- Unequal side lengths possible
- max. load up to 250 kg



Equal side lengths



Unequal side lengths

Further dimensions on request



Dimensions and further information can be taken from the respective query and order forms at the end of the chapter



# Balcony- and terrace door ramps – 2-section



## 2-section models with and without wheel guide curbs

Different ramp combinations are possible, depending on the inclination and step height. Extensive consultations required in advance for customized solutions.

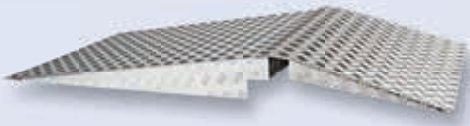
We will create a customised offer on the basis of your specifications and dimensions.



This ramp can be removed easily, e.g., to shut the door.

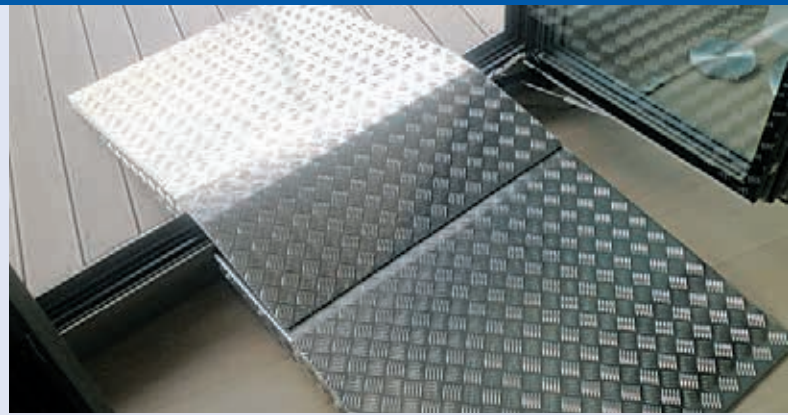
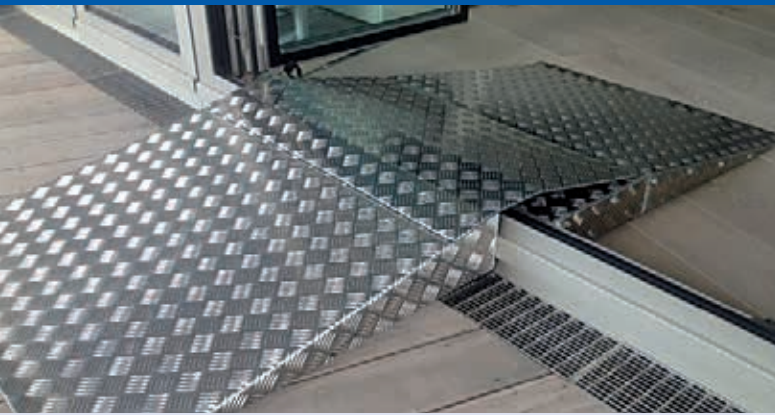
The ramp element located in the drawing room is removed or added according to requirement. The section lying outside can stay.

- Ideal for all sill types
- Width and height as per specification
- Max. load up to 250 kg



Dimensions and further information can be taken from the respective query and order forms at the end of the chapter

## Balcony- and terrace door ramps – 3-section



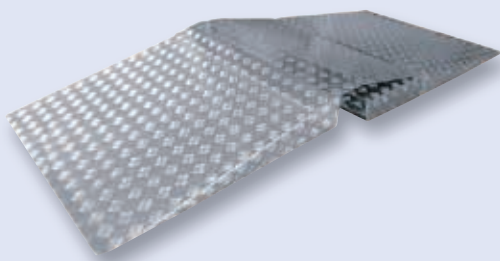
Load up to  
250 kg

### 3-section models without wheel guide curbs

The 3-section ramp system is ideal for locations not exposed to force, or where the handling of an entire ramp is not possible, or the inner and outer ramps must remain in position.

Only the small and light middle piece is added or removed as per requirement. The door can be closed directly over the ramp.

This ramp model can be used only under certain preconditions. Please send us the concrete dimensions and specifications along with your query. We will then develop your customised solution.



- For “single persons” without assistance
- Door closes/opens over the ramp
- Only one bridging ramp/- sheet (over the sill) is removed or added
- Suitable for all sill types
- Width and height as per specification
- Max. load up to 250 kg



Dimensions and further information can be taken from the respective query and order forms at the end of the chapter

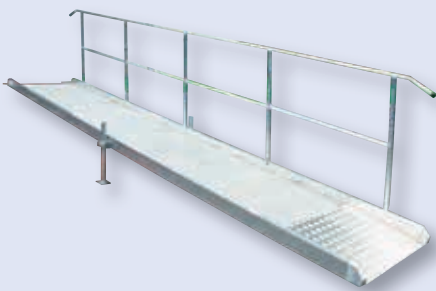


# Section ramps and platforms – for long ascents and descents



## Panel ramps

Large ramp length in connection with heavy wheelchairs, e.g., with electrical drive, require a change in the production process. Aluminium panels offer flexible length and high load-bearing capacity.



- Ramps with load up to 400 kg
- With railings on one side
- With railings on both sides

For public areas according to DIN 18040 (medical practices etc. and public buildings)

## Platforms for panel ramps

The ideal supplement for our panel ramps. Space-saving solutions over corners that can also replace existing platforms. The supporting legs can equalize uneven surfaces.



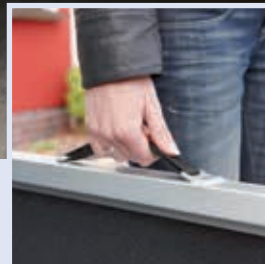
- With or without railings
- Height can be adjusted +/- 5 cm

For public areas according to DIN 18040 (medical practices etc. and public buildings)



Dimensions and further information can be taken from the respective query and order forms at the end of the chapter

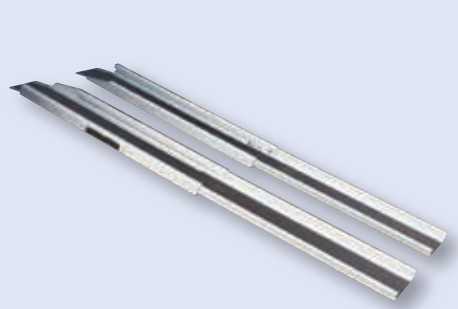




## Telescopic ramps with anti-skid coating

Our telescopic ramps can be adjusted longitudinally and held in any position by virtue of self-retention.

The inner edges in the support area are sloped for vehicles with little floor freedom. On



- Longitudinally adjustable
- Anti-skid coating
- Bottom side with rubber-coating
- Max. load up to 250 kg (see table below)
- With lateral supporting strap
- Excellent grab hold through self-retention

Art. No.	Ramp length*	Ramp width	Track width	Weight	Load
2-section model:					
TR130	80-137 cm	25 cm	19 cm	9 kg /pair	250 kg /pair
TR195	110-198 cm	25 cm	19 cm	13 kg /pair	250 kg /pair
TR310	170-317 cm	25 cm	19 cm	22 kg /pair	200 kg /pair
3-section model:					
TR290	113-287 cm	26 cm	18 cm	23 kg /pair	200 kg /pair

\*Total length incl. support • Support length: 10 cm • Lateral height: 4.5 – 6cm

Auxiliary resource No:  
**22.50.01.0055**



Dimensions and further information can be taken from the respective query and order forms at the end of the chapter

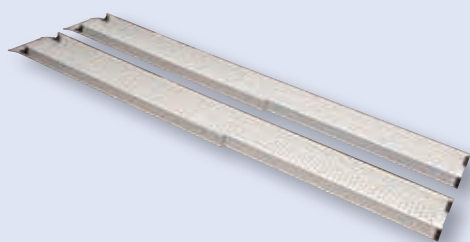
# Telescopic ramps – for heavy weights



## Telescopic ramp with perforated panels

Longitudinally adjustable telescopic ramps. Self-retention in any ramp position. The inner edges in the support area are sloped for vehicles with meagre floor freedom and the bottom-side rubber coating prevents skidding of the ramp.

An anti-skid perforated panel makes this ramp type optimal for use in wet conditions.



- Longitudinally adjustable
- Anti-skid perforated section
- Rubber coating on bottom side
- Max. load up to 320 kg (See table below)
- With lateral supporting strap
- Excellent grip due to self-retention

Art. No.	Ramp length*	Ramp width	Track width	Weight	Load
2-section models:					
LTR204	120-204 cm	24 cm	19 cm	13 kg /pair	320 kg /pair
3-section models:					
LTR290	120-290 cm	24 cm	17 cm	19 kg /pair	260 kg /pair

\* Total length incl. support • Support length: 6 cm • Lateral height: 6 cm

Resource No:  
**22.50.01.0054**



Dimensions and further information can be taken from the respective query and order forms at the end of the chapter

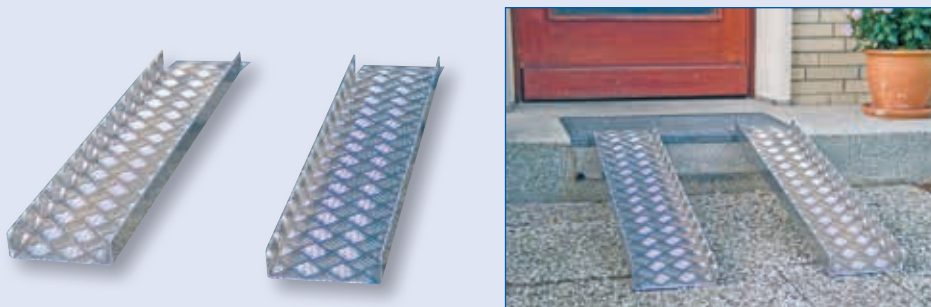




## Ascending ramp

The aluminium panels ensure easy handling and can support heavy loads by virtue of their special shape.

Thanks to the weight, they can also be placed in other positions or removed quickly.



- Load up to 250 kg
- With overrun protection
- Anti-skid

Art. No.	Ramp length*	Support length	Ramp width	Weight	Load
Ascending ramps:					
AFR100	100 cm	10 cm	20 cm	4,5 kg /pair	250 kg / pair
AFR150	150 cm	10 cm	20 cm	6,5 kg /pair	250 kg / pair
AFR200	200 cm	10 cm	20 cm	8,5 kg /pair	250 kg / pair

\* Total length including support



Dimensions and further information can be taken from the respective query and order forms at the end of the chapter

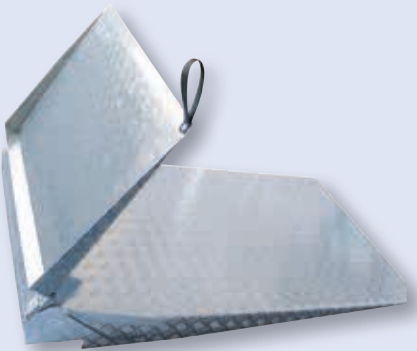
## Special ramp solutions – doesn't fit is just not possible!



### Sill ramp with folding mechanism

In this case example, getting a stable ramp solution for the existing electric wheelchair was very important for the senior citizen couple, which despite high load bearing capacity, is also flexible by design.

Inadequate physical force and narrow space ratios led to the development of this special ramp: The optimum solution therefore, was a folding mechanism supported by a Bowden cable and a traction loop.



- Folding mechanism
- Bowden cable for optimum force distribution during folding operation
- Particularly long and "soft" outer ascent
- Ramp can remain in the lying position



This sill ramp has been produced individually. If you too have a special overrun situation, we would be glad to offer you solution recommendations.



## HOW STEEP CAN A RAMP BE?

Determining the inclination is a very special factor. Because the inclination of a ramp and the required ramp length are based on different factors:

- Does the person operate the wheelchair on his own or is it pushed by a companion?
- How strong are the persons?
- What is the load the ramp must support?
- How high is the step or sill?
- How much space is available ?

The requirements of a ramp are described in detail in DIN 18040. The most important factor in this regard is the inclination of a ramp, which should normally not exceed 6%.

### Problem:

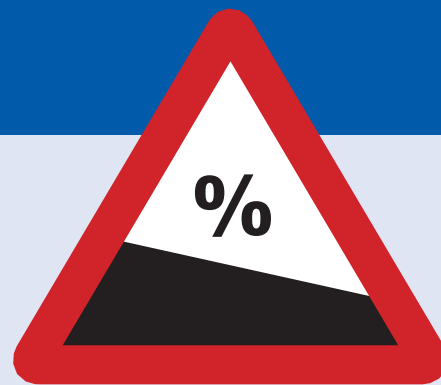
This naturally presupposes a corresponding ramp length. A ramp length which however, is frequently not available in the required form.

### Approach:

Assuming that the wheelchair is pushed by a companion, or an electric drive is available, the length of the ramp can also be shorter.

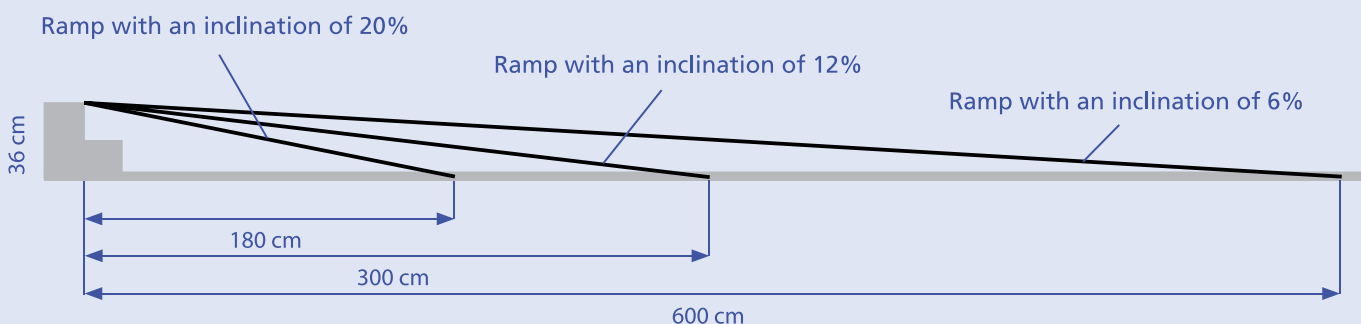
In this connection, the following inclination values have proved to be meaningful in practice:

- Self-operated: ..... 6 %
- A strong self-operator: ..... 7 % - 10 %
- A person pushes a rollator: ..... max. 12 %
- A strong person pushes the wheelchair: ..... max. 12 %
- A strong person pushes the wheel chair: ..... 13 % - 19 %
- Electrical drive: ..... ca. 20 %



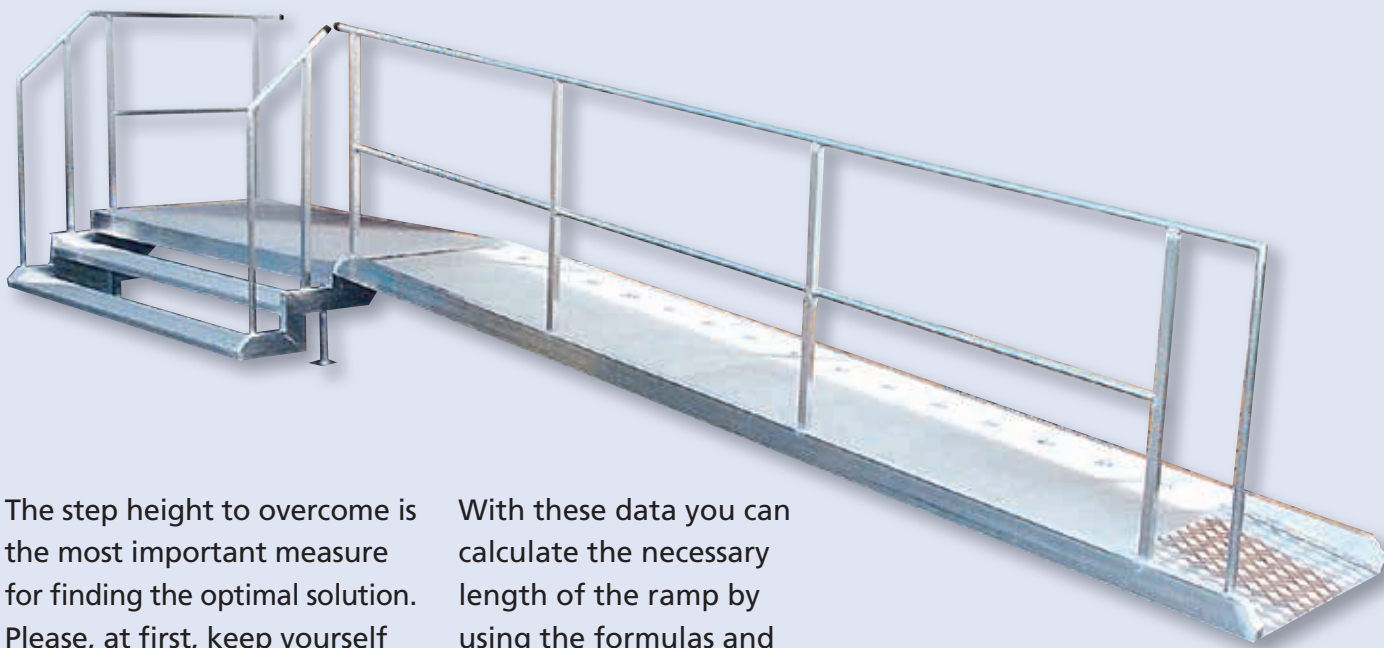
When exceeding an incline of 20%, safe movement can no longer be guaranteed. There is a risk that the wheelchair may tip over, or that the footrests touch the ground. Ramps in public areas must always be implemented in accordance with DIN norms.

Therefore, please check your requirements thoroughly in advance. Only a properly chosen incline guarantees proper daily functioning of the ramp later.



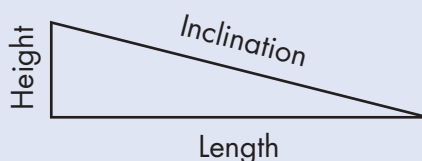
# Ramp calculation

## HOW BIG SHOULD A RAMP BE?



The step height to overcome is the most important measure for finding the optimal solution. Please, at first, keep yourself to the heights of the steps during the calculation. After that, you can choose the necessary inclination.

With these data you can calculate the necessary length of the ramp by using the formulas and examples below.



### Length calculation

$$\text{Length} = \frac{\text{Height} \times 100}{\text{Inclination}}$$

#### Example:

The staircase has 2 steps of 18 cm each = 36 cm total height. The inclination should be 12 %.

$$\frac{36 \text{ cm} \times 100}{12 \%} = 300 \text{ cm}$$

### Inclination calculation

$$\text{Inclination} = \frac{\text{Height} \times 100}{\text{Length}}$$

#### Example:

The step is 8 cm high. The ramp should be 70 cm long.

$$\frac{8 \text{ cm} \times 100}{70 \text{ cm}} = 11,4 \%$$

### Height calculation

$$\text{Height} = \frac{\text{Inclination} \times \text{Length}}{100}$$

#### Example:

The Ramp is 150 cm long. The inclination should be 12%.

$$\frac{12\% \times 150 \text{ cm}}{100} = 18 \text{ cm}$$



Query    Order

# Step ramps without railings

Please fill in and send by Fax to 0421/24105-15 or to info@rollstuhlrampen.de

\_\_\_\_\_  
Name

\_\_\_\_\_  
Street, House No.

\_\_\_\_\_  
Postcode, City, Country

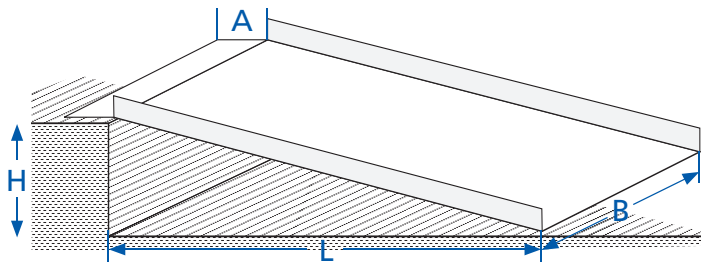
\_\_\_\_\_  
Telephone / Fax

\_\_\_\_\_  
Contact

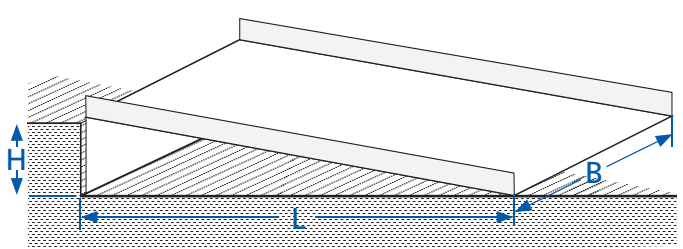
\_\_\_\_\_  
E-mail

\_\_\_\_\_  
Commission

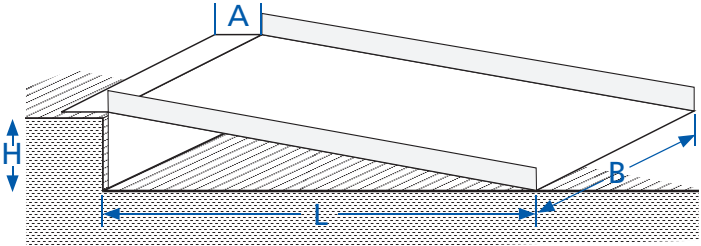
**Variant 1:**  
Only with support (without props)



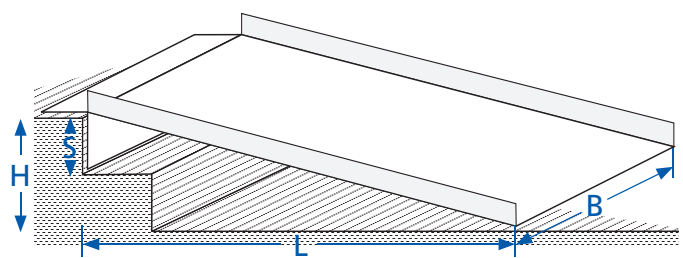
**Variant 2:**  
Without support, with props



**Variant 3:**  
With support and props



**"Alternative" with step section:**  
With support and props



H: \_\_\_\_\_ cm    A: \_\_\_\_\_ cm

L: \_\_\_\_\_ cm    S: \_\_\_\_\_ cm

B: \_\_\_\_\_ cm

**Max . load up to 250 kg!**

- E-wheelchair
- Self-operator without E- drive
- Is pushed

Pushing person:

- Light    Heavy

Weight rollator + person: \_\_\_\_\_ kg

**Carry handle**    Yes    No (if "Yes", mark the position  
Where it is to be mounted)

*Note: For production reasons, railings cannot be installed in this ramp type.*

Is your step situation missing? Please draw your own sketch:

Query     Order  
**Step ramps without wheel guide curbs**

Fill in and send by Fax to 0421/24105-15 or to info@rollstuhlrampen.de



\_\_\_\_\_ Name

\_\_\_\_\_ Street, House No.

\_\_\_\_\_ Postcode, City, Country

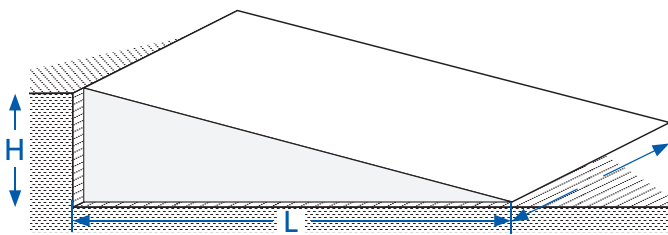
\_\_\_\_\_ Telephone / Fax

\_\_\_\_\_ Contact

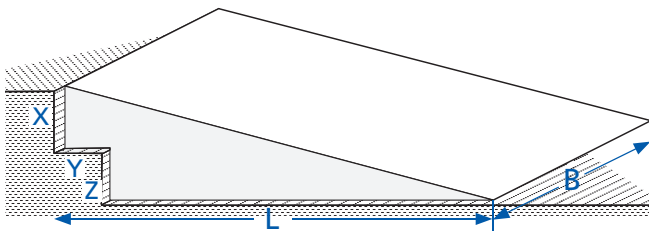
\_\_\_\_\_ E-mail

\_\_\_\_\_ Commission

**Variant 4:**  
without support



**"Alternative" with step section:**  
without support / for several steps

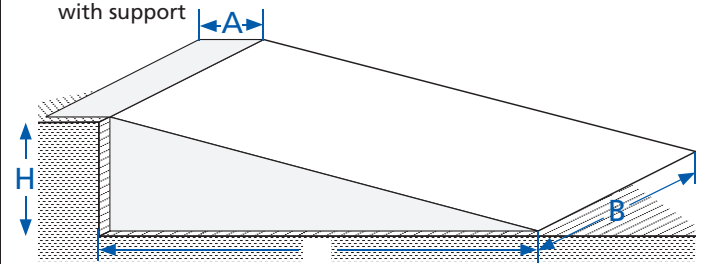


H: \_\_\_\_\_ cm    X: \_\_\_\_\_ cm  
 L: \_\_\_\_\_ cm    Y: \_\_\_\_\_ cm  
 B: \_\_\_\_\_ cm    Z: \_\_\_\_\_ cm  
 A: \_\_\_\_\_ cm    (10cm length)

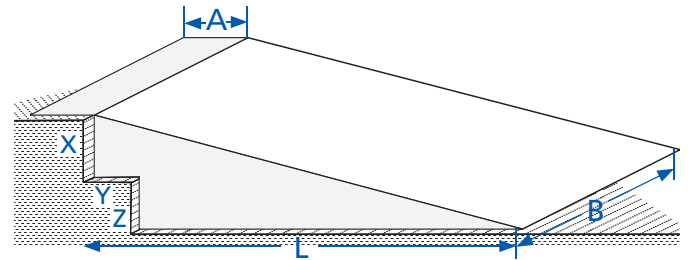
**Carry handle**    Yes    No (if "Yes", mark the position  
 Where it is to be mounted)

*Note: For production reasons, railings cannot be installed in this ramp type.*

**Variant 5:**  
with support



**"Alternative" with step section:**  
with support / for several steps



**Max . load up to 250 kg!**

- E-wheelchair
- Self-operator without e-drive
- Is pushed

Pushing person:

- Light    Heavy

**Weight of wheelchair + Person:** \_\_\_\_\_ kg

*Is your step situation missing? Please draw your own sketch:*



Query     Order

# Platforms for step ramps

Fill in and send by Fax to 0421/24105-15 or to info@rollstuhlrampen.de

\_\_\_\_\_  
Name

\_\_\_\_\_  
Street, House No.

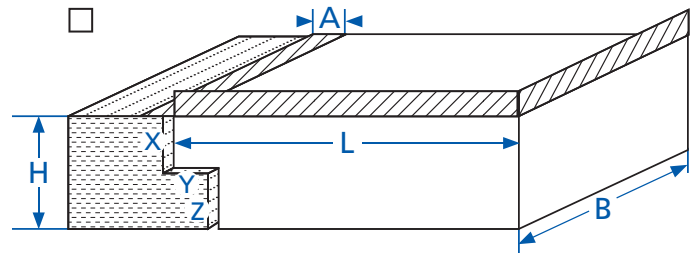
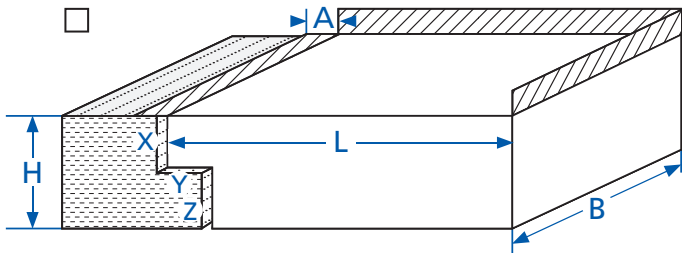
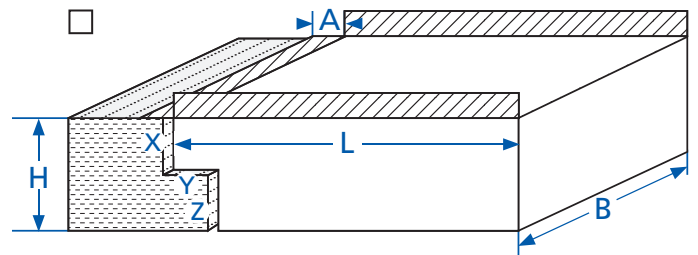
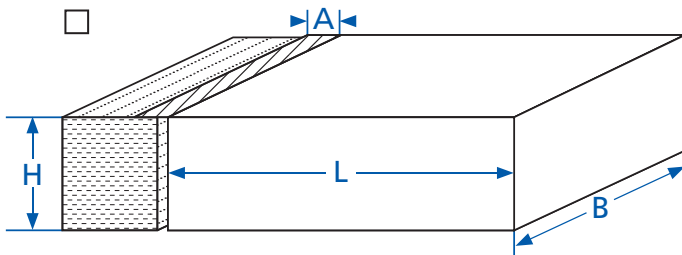
\_\_\_\_\_  
Postcode, City, Country

\_\_\_\_\_  
Telephone / Fax

\_\_\_\_\_  
Contact

\_\_\_\_\_  
E-mail

\_\_\_\_\_  
Commission



**Load up to 250 kg!**

- L: \_\_\_\_\_ cm      H: \_\_\_\_\_ cm  
 B: \_\_\_\_\_ cm      X: \_\_\_\_\_ cm  
 A: \_\_\_\_\_ cm      Y: \_\_\_\_\_ cm  
 without support    Z: \_\_\_\_\_ cm  
 with support

**Recommended/optional**

- Straight passage 100 x 100 cm  
 Passage over corner 120 x 120 cm  
 Support 10 cm

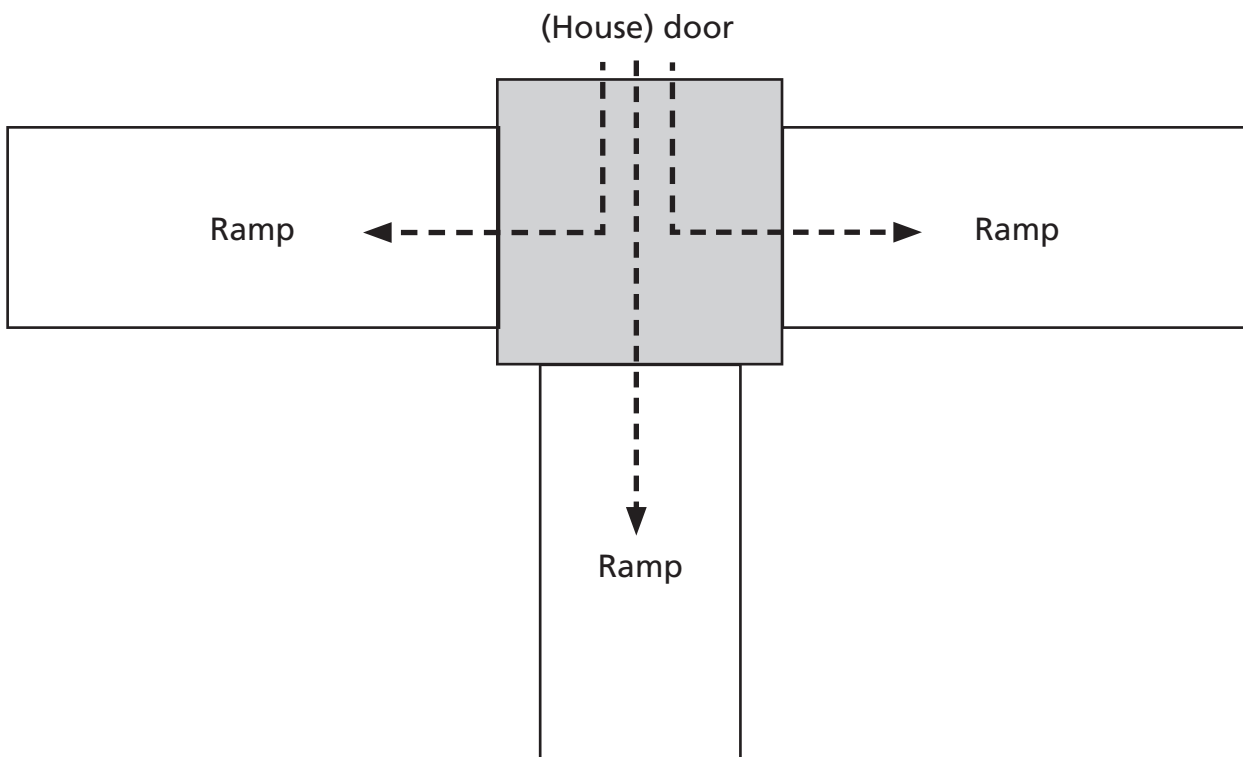
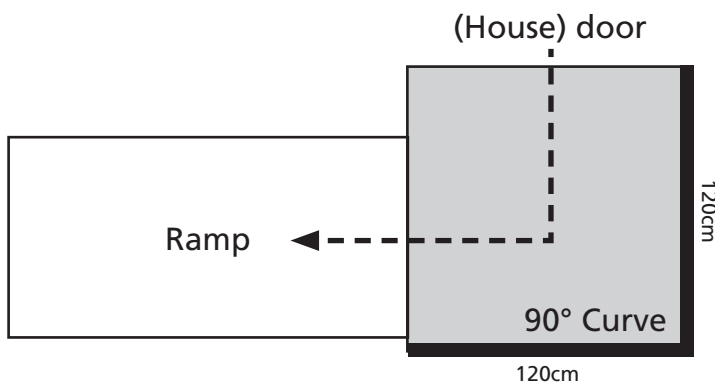
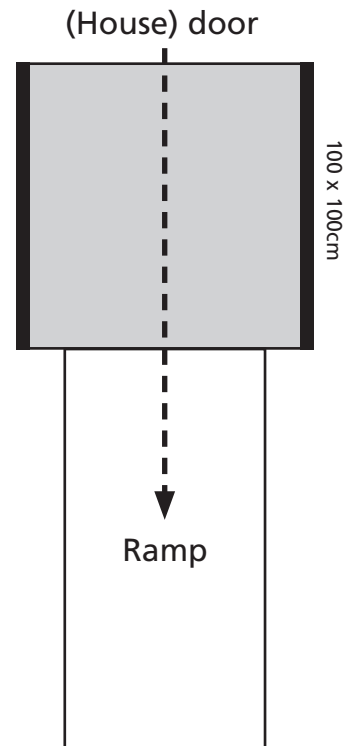
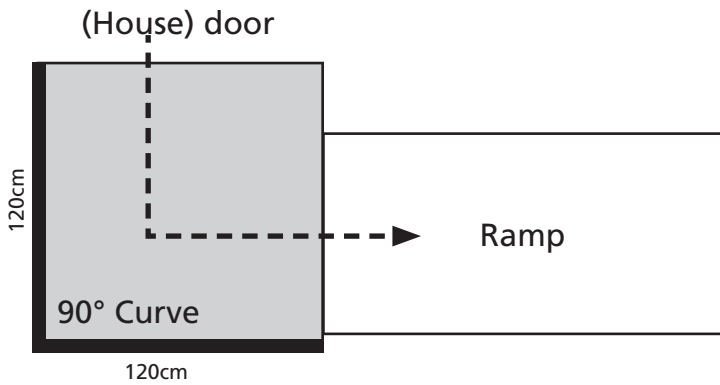
**All platforms can be adjusted in height by +/- 2cm.**

Please also observe the examples on the reverse side!

*Is your step situation missing? Please draw your own sketch here:*



# Examples Platforms for step ramps





Query    Order

# Door sill ramps, single-section

Fill in and send by fax to 0421/24105-15 or to info@rollstuhlrampen.de



please copy

\_\_\_\_\_

Name

\_\_\_\_\_

Street, House No.

\_\_\_\_\_

Postcode, City, Country

\_\_\_\_\_

Telephone / Fax

\_\_\_\_\_

Contact

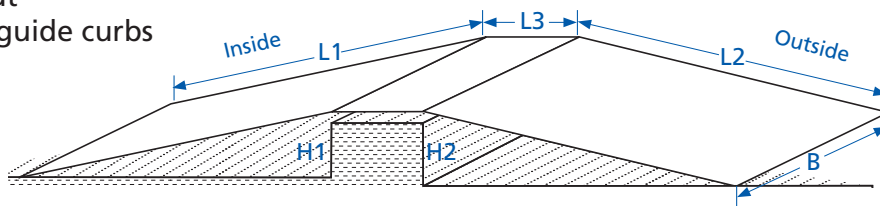
\_\_\_\_\_

E-mail

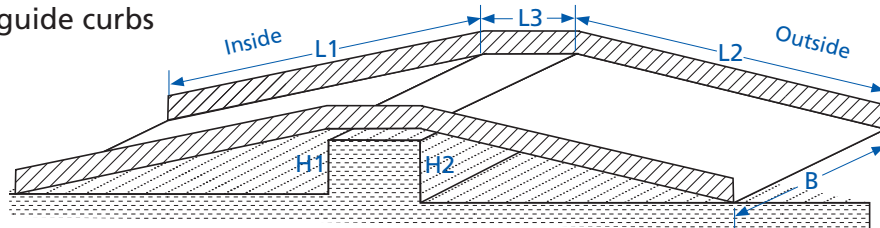
\_\_\_\_\_

Commission

Without wheel guide curbs



With wheel guide curbs



H1: \_\_\_\_\_ cm

H2: \_\_\_\_\_ cm

L1: \_\_\_\_\_ cm

L2: \_\_\_\_\_ cm

L3: \_\_\_\_\_ cm

B: \_\_\_\_\_ cm

**Note:**

Not suitable for balcony doors!

If the ramps must be removed for closing the door, please use the form "Terrace door ramps", as this ramp type is essentially easier to handle

**Carry handle**    Yes    No

If "Yes", please mark the position at which it is to be mounted)

Is your step situation missing? Please draw your own sketch here:

E-wheelchair

Self-operator without e-drive

Is pushed

Pushing person:

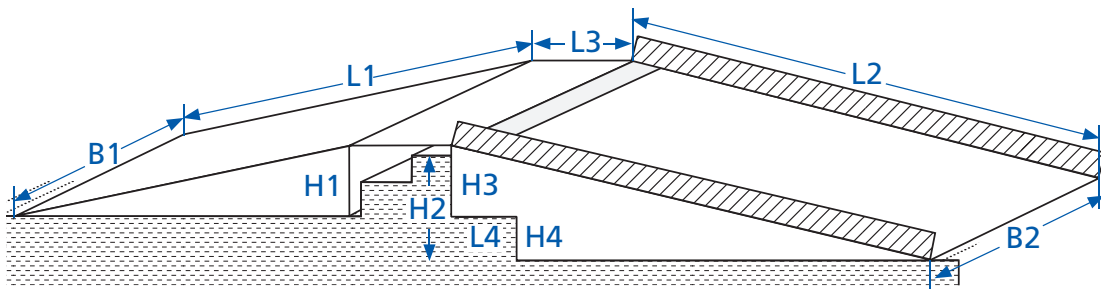
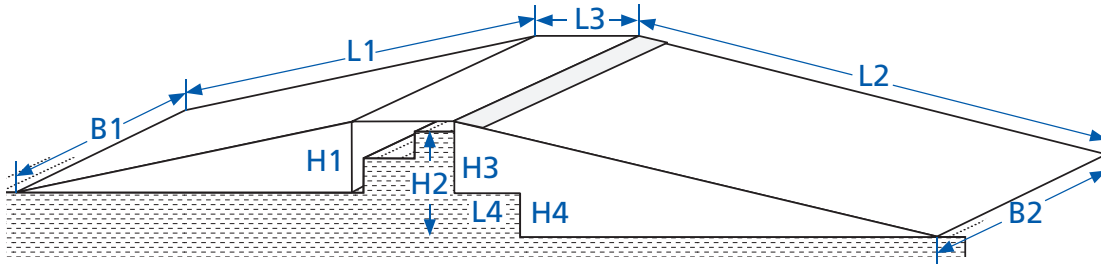
Light    Heavy

Weight wheelchair + person: \_\_\_\_\_ kg



Query    Order  
**Terrace door ramps**

Fill in and send by fax to 0421/24105-15 or to info@rollstuhlrampen.de



H1: \_\_\_\_\_ cm

B1: \_\_\_\_\_ cm

L1: \_\_\_\_\_ cm

H2: \_\_\_\_\_ cm

B2: \_\_\_\_\_ cm

L2: \_\_\_\_\_ cm

H3: \_\_\_\_\_ cm

L3: \_\_\_\_\_ cm

H4: \_\_\_\_\_ cm

L4: \_\_\_\_\_ cm

Is your step situation missing? Please draw your own sketch here:



Query    Order  
**Terrace door ramps, 2-section**

Fill in and send by fax to 0421/24105-15 or to info@rollstuhlrampen.de

Name \_\_\_\_\_

Street, House No. \_\_\_\_\_

Postcode, City, Country \_\_\_\_\_

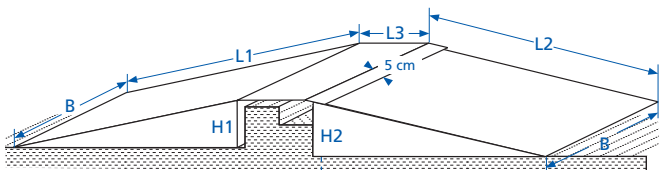
Telephone / Fax \_\_\_\_\_

Contact \_\_\_\_\_

E-mail \_\_\_\_\_

Commission \_\_\_\_\_

**zTSR-Au without wheel guide curbs**

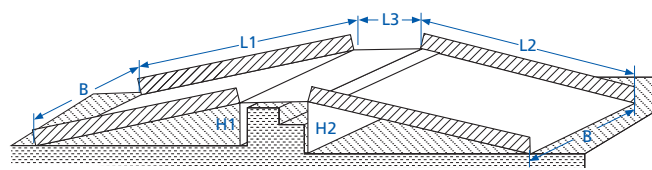


Inside:  
Remove to shut door

Outside:  
Stays!

H1: \_\_\_\_\_ cm      H2: \_\_\_\_\_ cm  
 L1: \_\_\_\_\_ cm      L2: \_\_\_\_\_ cm  
 L3: \_\_\_\_\_ cm      B: \_\_\_\_\_ cm

**zTSR-Ao with wheel guide curbs**

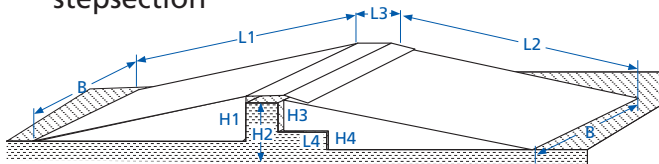


Inside:  
Remove to shut door

Outside:  
Stays!

H1: \_\_\_\_\_ cm      H2: \_\_\_\_\_ cm  
 L1: \_\_\_\_\_ cm      L2: \_\_\_\_\_ cm  
 L3: \_\_\_\_\_ cm      B: \_\_\_\_\_ cm

**zTSR-Au without wheel guide curbs with stepsection**

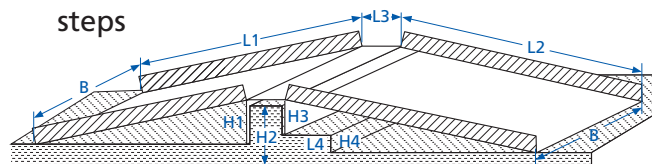


Inside:  
Remove to shut door

Outside:  
Stays!

H1: \_\_\_\_\_ cm      H2: \_\_\_\_\_ cm  
 L1: \_\_\_\_\_ cm      H3: \_\_\_\_\_ cm  
 L2: \_\_\_\_\_ cm      H4: \_\_\_\_\_ cm  
 L3: \_\_\_\_\_ cm      L4: \_\_\_\_\_ cm  
 B: \_\_\_\_\_ cm

**zTSR-Ao with wheel guide curbs for several steps**



Inside:  
Remove to shut door

Outside:  
Stays!

H1: \_\_\_\_\_ cm      H2: \_\_\_\_\_ cm  
 L1: \_\_\_\_\_ cm      H3: \_\_\_\_\_ cm  
 L2: \_\_\_\_\_ cm      H4: \_\_\_\_\_ cm  
 L3: \_\_\_\_\_ cm      L4: \_\_\_\_\_ cm  
 B: \_\_\_\_\_ cm

**Max . load up to 250 kg!**

- E-wheelchair
- Self-operator without e-drive
- Is pushed
  - Pushing person:
    - Light    Heavy
- Weight wheelchair + person: \_\_\_\_\_ kg**

**Carry handle**    Yes    No (If "Yes", please mark the position where it is to be mounted)

- Door opens inside
- Door opens outside
- Sliding door

*Is your step situation missing? Please draw your own sketch and add it.*

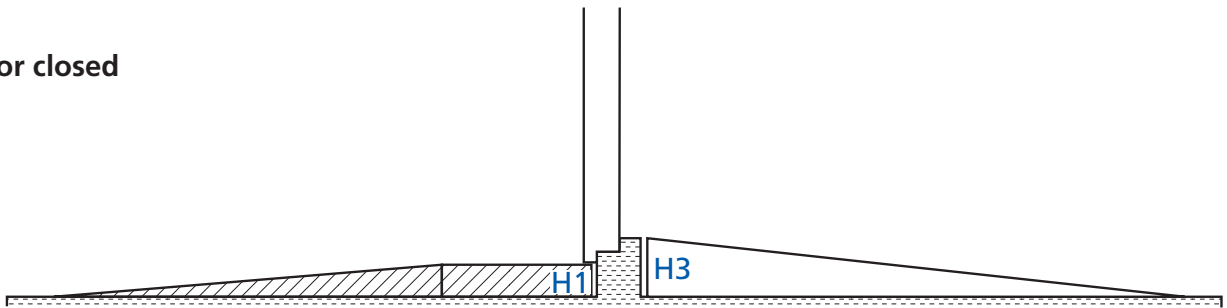
Query    Order  
**Terrace door ramps, 3-section**

Fill in and send by fax to 0421/24105-15 or to info@rollstuhlrampen.de

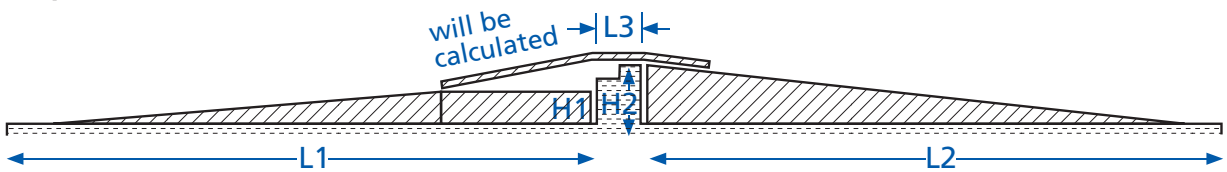


- Ramps should always remain laid.
- Door opens and shuts over ramp.
- Only one bridging ramp to be removed to shut door!

View: Door closed



View: Door open



H1 = Height below the shut door: \_\_\_\_\_ L1 = Inside length: \_\_\_\_\_

H2 = Full height of door frame: \_\_\_\_\_ L2 = Outside length: \_\_\_\_\_

H3 = Outside height \_\_\_\_\_ L3 = Depth of door frame: \_\_\_\_\_

**Carry handle**  Yes  No Max. ramp width \_\_\_\_\_ cm

If "Yes", please mark the position at which it is to be mounted)

Door opens inside       Door opens outside       Sliding door

*Is your step situation missing? Please draw your own sketch here:*

Query    Order  
**Telescopic ramps & rail ramps**

Fill in and send by fax to 0421/24105-15 or to info@rollstuhlrampen.de



please copy

\_\_\_\_\_  
Name

\_\_\_\_\_  
Street, House No.

\_\_\_\_\_  
Postcode, City, Country

\_\_\_\_\_  
Telephone / Fax

\_\_\_\_\_  
Contact

\_\_\_\_\_  
E-mail

\_\_\_\_\_  
Commission

Art. No.	Ramp length <sup>1</sup>	Ramp width	Track width	Weight	Load	Query	Order
<b>2-section models:</b>							
TR130	80-137 cm	25 cm	19 cm	9 kg /pair	250 kg /pair	<input type="checkbox"/>	<input type="checkbox"/>
TR195	110-198 cm	25 cm	19 cm	13 kg /pair	250 kg /pair	<input type="checkbox"/>	<input type="checkbox"/>
TR310	170-317 cm	25 cm	19 cm	22 kg /pair	200 kg /pair	<input type="checkbox"/>	<input type="checkbox"/>
<b>3-section models:</b>							
TR290	113-287 cm	26 cm	18 cm	23 kg /pair	200 kg /pair	<input type="checkbox"/>	<input type="checkbox"/>

<sup>1</sup> Total length incl. support • Support length: 10 cm • Lateral height: 4.5-6 cm

Art. No.	Ramp length <sup>1</sup>	Ramp width	Track width	Weight	Load	Query	Order
<b>2-section models:</b>							
LTR204	120-204 cm	24 cm	19 cm	13 kg /pair	320 kg /pair	<input type="checkbox"/>	<input type="checkbox"/>
<b>3-section models:</b>							
LTR290	120-290 cm	24 cm	17 cm	19 kg /pair	260 kg /pair	<input type="checkbox"/>	<input type="checkbox"/>

<sup>1</sup> Total length incl. support • Support length: 6 cm • Lateral height: 6 cm

Art. No.	Ramp length <sup>1</sup>	Support length	Ramp width	Weight	Load	Query	Order
<b>Ascent ramps:</b>							
AFR100	100 cm	10 cm	20 cm	4,5 kg /pair	250 kg / pair	<input type="checkbox"/>	<input type="checkbox"/>
AFR150	150 cm	10 cm	20 cm	6,5 kg /pair	250 kg / pair	<input type="checkbox"/>	<input type="checkbox"/>
AFR200	200 cm	10 cm	20 cm	8,5 kg /pair	250 kg / pair	<input type="checkbox"/>	<input type="checkbox"/>

<sup>1</sup> Total length including support

Is your ramp missing? Please draw your own sketch here:





Query    Order  
**Section ramps**

Fill in and send by fax to 0421/24105-15 or to info@rollstuhlrampen.de



\_\_\_\_\_

Name

\_\_\_\_\_

Street, House No.

\_\_\_\_\_

Postcode, City, Country

\_\_\_\_\_

Telephone / Fax

\_\_\_\_\_

Contact

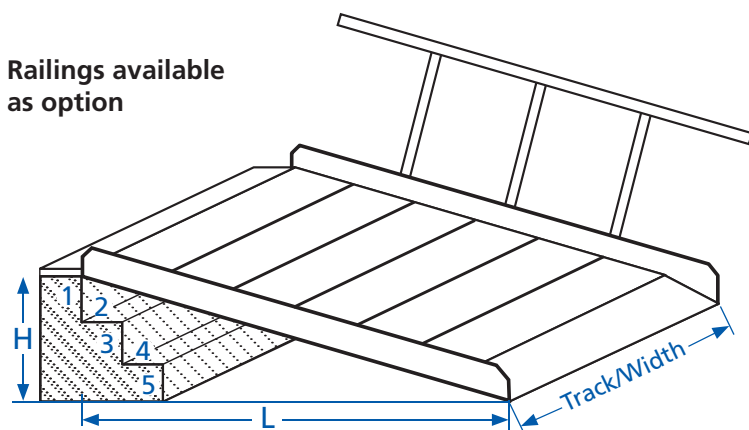
\_\_\_\_\_

E-mail

\_\_\_\_\_

Commission

**Railings available as option**



- E-wheelchair
- Self-operator without e-drive
- Is pushed

Pushing person:

- Light    Heavy

Weight wheelchair + person: \_\_\_\_\_ kg

Max . load up to 400 kg!

**Please, dimension the stairs!**  
 From 4m length, in two pieces for the transportation

**Track / Width:**

- 80 / 88 cm
- 100 / 108 cm
- 120 / 128 cm
- \_\_\_\_\_ / \_\_\_\_\_ cm

**Railings:**

- without Railing
- both sides
- on one side, in moving direction top left
- on one side, in moving direction top right

**L:** \_\_\_\_\_ cm

**H:** \_\_\_\_\_ cm

**1:** \_\_\_\_\_ cm

**2:** \_\_\_\_\_ cm

**3:** \_\_\_\_\_ cm

**4:** \_\_\_\_\_ cm

**5:** \_\_\_\_\_ cm

*Is your step situation missing? Please draw your own sketch here:*

Query    Order

# Platforms for section ramps

Fill in and send by fax to 0421/24105-15 or to info@rollstuhlrampen.de

\_\_\_\_\_  
Name

\_\_\_\_\_  
Street, House No.

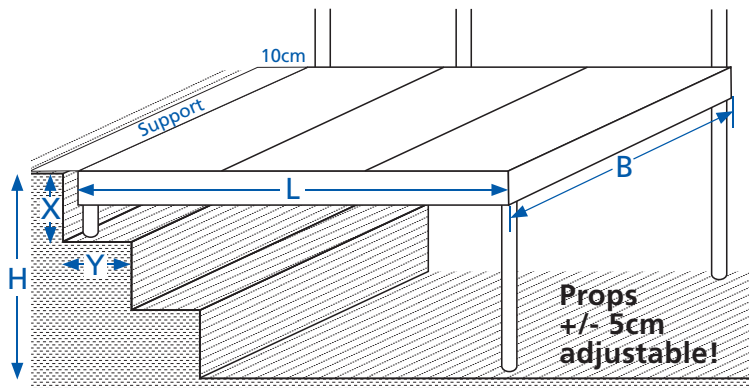
\_\_\_\_\_  
Postcode, City, Country

\_\_\_\_\_  
Telephone / Fax

\_\_\_\_\_  
Contact

\_\_\_\_\_  
E-mail

\_\_\_\_\_  
Commission



**Load up to 400 kg**

Additional steps on platform:

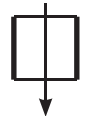
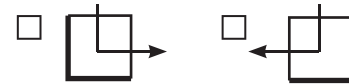
\_\_\_\_\_

The number of steps is based on the total height, see examples X on the reverse side.

Without railings, but with overrun protection

Railings: left and right

Railings over corner



Please also see the examples and instructions on the reverse side!

**Length**

- 88 cm
- 128 cm
- 168 cm
- 208 cm

**Width**

- 100 cm
- 120 cm
- 150 cm
- \_\_\_\_\_ cm

H: \_\_\_\_\_ cm

X: \_\_\_\_\_ cm

Y: \_\_\_\_\_ cm

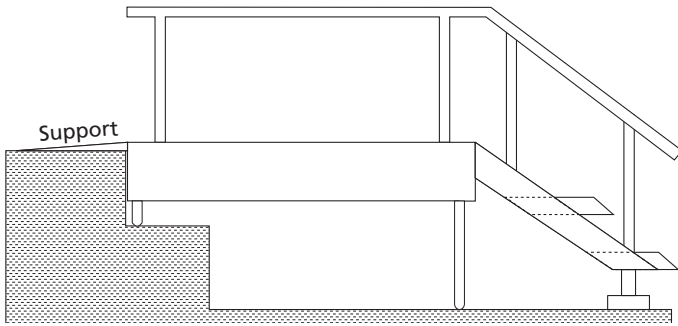
10 cm support for existing step

without support

Is your step situation missing? Please draw your own sketch here:  
(Please also see the examples on the reverse side)



# Examples Platforms for section ramps



### Example:

Platform with railings and steps

The number of steps is based on the total height!

