

Query Order

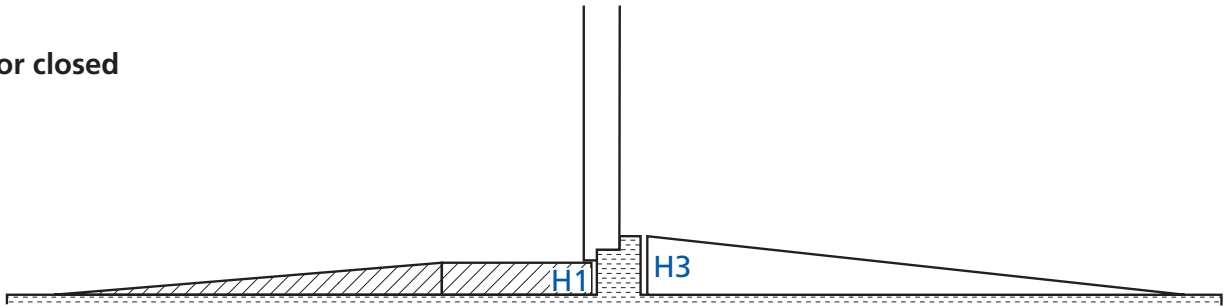
Terrace door ramps, 3-section

Fill in and send by fax to 0421/24105-15 or to info@rollstuhlrampen.de

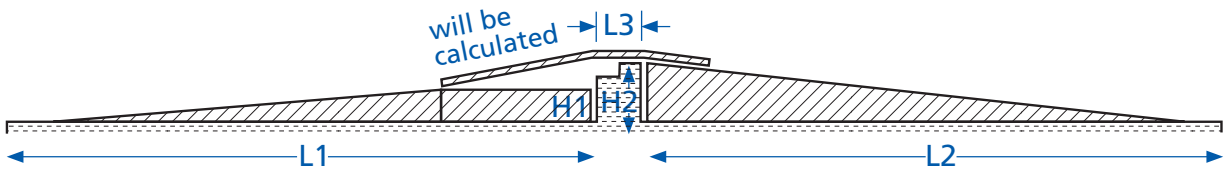


- Ramps should always remain laid.
- Door opens and shuts over ramp.
- Only one bridging ramp to be removed to shut door!

View: Door closed



View: Door open



H1 = Height below the shut door: _____

L1 = Inside length: _____

H2 = Full height of door frame: _____

L2 = Outside length: _____

H3 = Outside height _____

L3 = Depth of door frame: _____

Carry handle Yes No

Max. ramp width _____ cm

If "Yes", please mark the position at which it is to be mounted)

Door opens inside

Door opens outside

Sliding door

Is your step situation missing? Please draw your own sketch here: